



# CKD Kidney Care

## e-Learn Series Overview

Andrea Moore  
Kidney Care Project Manager



# Background

## *The Significance*

- 37 million adults in the United States have chronic kidney disease or CKD
- Nine out of 10 adults are unaware of their compromised kidney function until their condition has progressed and requires intervention
- Kidney disease ranks as the ninth leading cause of death in America
- Those with hypertension and/or diabetes possess the highest risk of developing CKD
- Approximately 20% of dollars in traditional Medicare—\$114 billion a year—are spent on beneficiaries with kidney disease
- In 2019 the Advancing American Kidney Health initiative sets forth a goal of reducing the number of Americans developing kidney failure by 25 percent by 2030

Centers for Disease Control and Prevention. (2017). National Diabetes Statistics Report, 2017. Atlanta, GA: US Department of Health and Human Services. Retrieved from <https://www.cdc.gov/diabetes/pdfs/data/statistics/national-diabetes-statistics-report.pdf>



# Kidney Care



## *Identifying and Managing CKD*

- The Kidney Care project promotes risk stratification of CKD, early detection of CKD, improved monitoring and management of CKD, and timely and appropriate referral to nephrology
- Primary care teams that incorporate risk identification and the early detection of CKD into their workflow have the opportunity to better manage patients' care
  - These efforts can slow or even stop the progression of CKD, as well as support timely and appropriate referrals to nephrology.
- Primary care teams can help reduce disparities in care for CKD by focusing on early identification and treatment, monitoring progression, collaborating with nephrologists and other specialists, building care teams and engaging patients



# KIDNEY *Care*

Identifying and Managing CKD



**Addressing Social Determinants in CKD: Quality Indicators for...**



**Approaches to Identifying Chronic Kidney Disease: Promoting...**



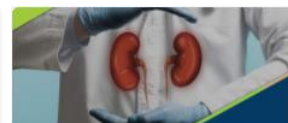
**Identifying CKD: Leveraging EHRs and Improving Detection Rates**



**Managing CKD - Dietician Role in Team-Based Kidney Care**



**Managing CKD - Pharmacist Role in Team-Based Kidney Care**



**Timely and Appropriate Referral to Nephrology**

# Exploring the Kidney Care e-Learn Series

- Courses are 60 minutes in length and include interactive scenarios, additional handouts and resources.
- Target Audience: **All courses are appropriate for health care professionals, especially those who work in or collaborate with primary care physician practice settings.**
- Learn how to use specific quality indicators that can be applied to most electronic health records (EHRs) and health systems to improve CKD detection rates.
- Learn techniques to incorporate CKD risk identification and early detection into a regular workflow, tools for staging, and how to enhance patient care management and reduce disparities in care for CKD.
- Learn to identify key social determinants of health (SDOH) for people with or at-risk for CKD along racial, ethnic and socioeconomic lines.



# Exploring the Kidney Care e-Learn Series

- Explore specific tools and techniques to improve care and outcomes for patients with or at-risk for CKD.
- Explore the integration of ambulatory care pharmacists into a team-based approach to kidney care, which can help slow or stop the progression of CKD and improve patient health outcomes, quality of life and cost of care. Two medication management interventions will be discussed.
- Explore the benefits of medical nutrition therapy, roles and responsibilities of the dietitian and core care team, dietary differences for CKD Stages 3 and 4 and how to prioritize dietary treatment based on four factors.
- Learn about the role of the nephrologist with the PCP to co-manage patient care in a timely and appropriate manner.

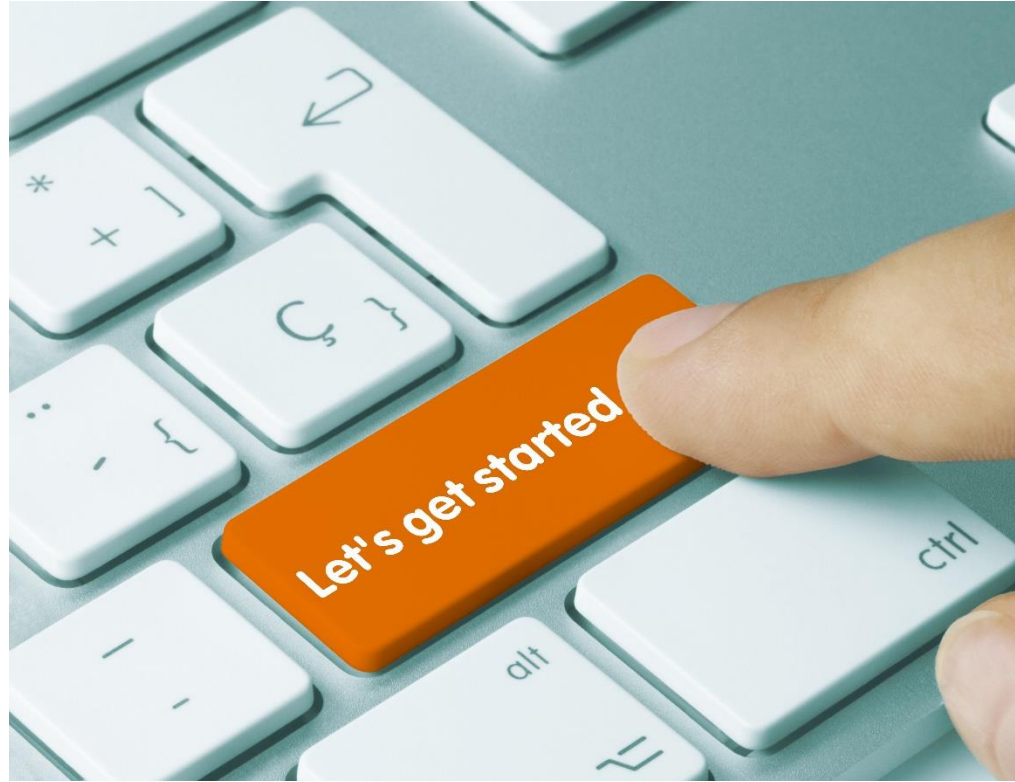


# Enrolling in the Kidney Care e-Learn Series

- To register, “learners” need to simply create an account on the EDISCO secure account portal
- Not limited in the number of courses you can take
- Pre-requisites not required—take e-Learns in the order of your choice
- The Kidney Care e-Learns series can be shared widely and without prior consent
- Attendance certificates are available upon completion
- **Free nursing, physician, pharmacist and dietitian continuing education credits are also available for each course.**



To enroll, visit  
[www.ediscolearn.com](http://www.ediscolearn.com)  
and select the  
“Kidney Care”  
catalog.





# SIMPLE, FLEXIBLE LEARNING



FILTERS

Search for...



CARDS

CODE (ASCENDING ORDER)

## Webinars



DAY 1: Diabetes Symposium for School Nurses WEBINAR...

FREE  
EN

E-Learning



DAY 2 Diabetes Symposium for School Nurses WEBINAR...

FREE  
EN

E-Learning



Basics of Health Equity: Relevance & Responsibility of Equity for Healthcare...

FREE  
EN

E-Learning



ON DEMAND Healthcare Cyber Security & Compliance

\$ 44.95  
EN ★ 4.0

E-Learning

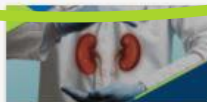


Bridging the Gaps: How to Leverage Home Health Safety Practices...

FREE  
EN ★ 5.0

E-Learning

## Kidney Care



Managing CKD: Timely and Appropriate Referral to Nephrology

FREE  
EN

E-Learning



Managing CKD: The Dietitian's Role in Team-based Kidney Care

FREE  
EN

E-Learning



Managing CKD: The Pharmacist's Role in Team-based Kidney Care

FREE  
EN

E-Learning



Addressing Social Determinants in CKD: Quality Indicators for...

FREE  
EN ★ 5.0

E-Learning



Identifying CKD: Leveraging EHRs and Improving Detection Rates

FREE  
EN ★ 4.0

E-Learning



Approaches to Identifying Chronic Kidney Disease: Prompting Detection at...

FREE  
EN ★ 4.0

E-Learning



## Identifying CKD: Leveraging EHRs and Improving Detection Rates

ID: E-D19E41

Language: English - ★★★★★☆

### ABOUT THIS COURSE

### CONTENT

#### Identifying CKD: Leveraging EHRs and Improving Detection Rates

Early identification and management of chronic kidney disease (CKD) can slow or prevent disease progression, leading to improved opportunity for kidney health. This course is a reference of actions for general practitioners to take to improve identification of individuals at risk for developing CKD. Learn through this interactive online course by Quality Insights how to use specific quality indicators that can be applied to most electronic health records (EHRs) and health systems.

This course is intended to accompany the *Chronic Kidney Disease Disparities: Educational Guide for Primary Care* from the Centers for Medicare & Medicaid Services.

**Audience:** The information in this course is appropriate for primary care providers.

#### Learning Objectives:

After taking this course, the learner will be able to:

- Discuss two (2) benefits of early identification of CKD in adult patients.
- Explain how to leverage EHRs to identify and manage patients at risk for CKD.
- State two (2) quality indicators for CKD identification in adult patients.
- Identify three (3) types of medications that increase CKD risk in adults.

#### Requirements:

To complete this online course, the learner will need to:

Free

ENROLL

#### Other courses that may interest you...



Approaches to Identifying  
Chro...

FREE  
English



Addressing Social  
Determinants...

FREE  
English



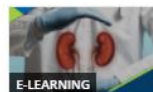
Managing CKD: The  
Pharmacist's...

FREE  
English



Managing CKD: The Dietitian's  
...

FREE  
English

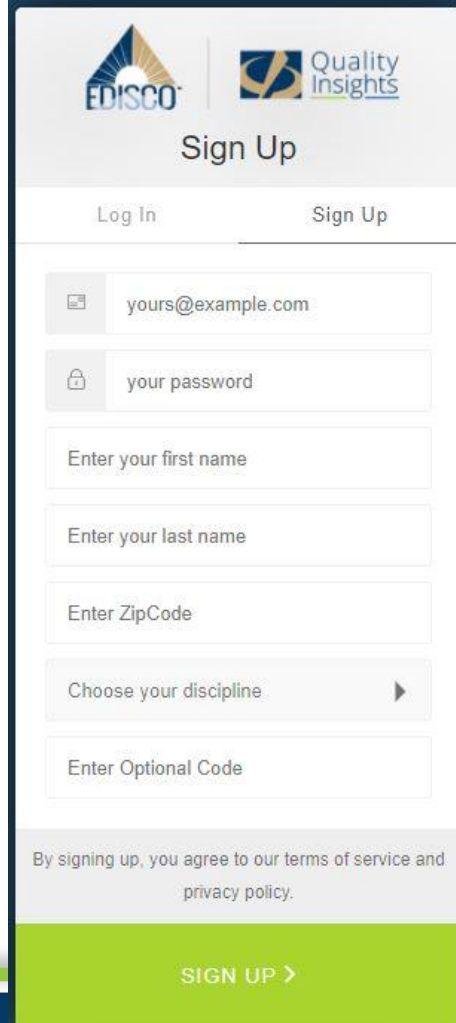


Managing CKD: Timely and  
Appro...

FREE  
English

SHOW MORE

# Ediscolearn.com Sign Up Form



The screenshot shows the sign-up interface for Ediscolearn.com. At the top, there are logos for EDISCO and Quality Insights. Below the logos is the title "Sign Up". There are two buttons: "Log In" and "Sign Up". The form contains several input fields: an email field with the placeholder "yours@example.com", a password field with the placeholder "your password", a field for "Enter your first name", a field for "Enter your last name", a field for "Enter ZipCode", a dropdown menu for "Choose your discipline" with a right-pointing arrow, and a field for "Enter Optional Code". At the bottom of the form, there is a disclaimer: "By signing up, you agree to our terms of service and privacy policy." Below the disclaimer is a large green button with the text "SIGN UP >".

EDISCO | Quality Insights

## Sign Up

Log In Sign Up

Enter your first name

Enter your last name

Enter ZipCode

Choose your discipline ▶

Enter Optional Code

By signing up, you agree to our terms of service and privacy policy.

**SIGN UP >**



# Questions?



# Contact

Andrea Moore

Kidney Care Project Manager

[amoore@qualityinsights.org](mailto:amoore@qualityinsights.org)



This material was prepared by Quality Insights, the Medicare Quality Innovation Network-Quality Improvement Organization for Pennsylvania and West Virginia under contract with the Centers for Medicare & Medicaid Services (CMS), an agency of the U.S. Department of Health and Human Services. The contents presented do not necessarily reflect CMS policy. Publication number 12SOW-QI-CC-022321

